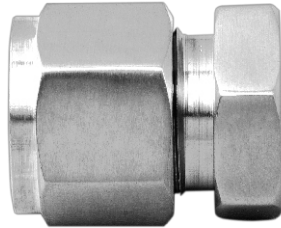
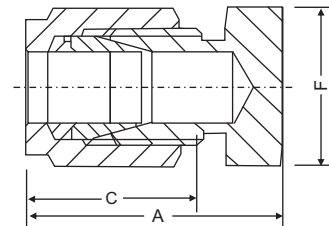


CAP

CAP



Dimensional Details :



Notes : Drawings are not to scale

Dimension, in.

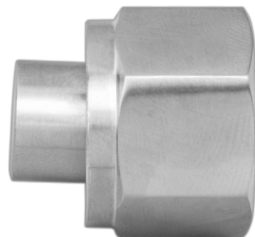
Tube OD	Part Number	A	C	F
1/8	S2CP2	0.79	0.50	7/16
1/4	S4CP4	0.92	0.60	1/2
3/8	S6CP6	1.01	0.66	5/8
1/2	S8CP8	1.15	0.90	13/16
5/8	S10CP10	1.18	0.96	15/16
3/4	S12CP12	1.24	0.96	1 1/16
7/8	S14CP14	1.34	1.02	1 3/16
1	S16CP16	1.51	1.23	1 3/8

Dimension, mm.

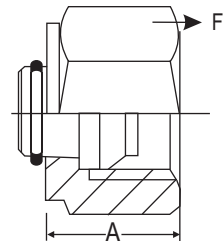
Tube OD	Part Number	A	C	F
6	SM6CPM	23.1	15.3	1/2
8	SM8CPM	24.5	16.2	9/16
10	SM10CPM	26.6	17.2	11/16
12	SM12CPM	29.1	22.8	13/16
16	SM16CPM	29.9	24.4	15/16
18	SM18CPM	31.4	24.4	1 1/16
20	SM20CPM	34.0	26.0	1 3/16
25	SM25CPM	38.5	31.3	1 3/8

PL

PLUG



Dimensional Details :



Notes : Drawings are not to scale

Dimension, in.

Tube OD	Part Number	A	F
1/8	S2PL2	0.47	7/16
1/4	S4PL4	0.50	9/16
3/8	S6PL6	0.56	11/16
1/2	S8PL8	0.69	7/8
5/8	S10PL10	0.69	1
3/4	S12PL12	0.69	1 1/8
7/8	S14PL14	0.69	1 1/4
1	S16PL16	0.81	1 1/2

Dimension, mm.

Tube OD	Part Number	A	F
6	SM6PL	12.7	14
8	SM8PL	13.5	16
10	SM10PL	15.1	19
12	SM12PL	17.4	22
16	SM16PL	17.4	25
18	SM18PL	17.4	30
20	SM20PL	17.4	32
25	SM25PL	20.6	38

Dimensions and specifications shown are approximate, may vary from time to time.

Note : A and C dimensions are typical finger-tight

Super-Lok tube fittings are ordered by part numbers as listed in this catalogue and other sizes will be available on request.

